

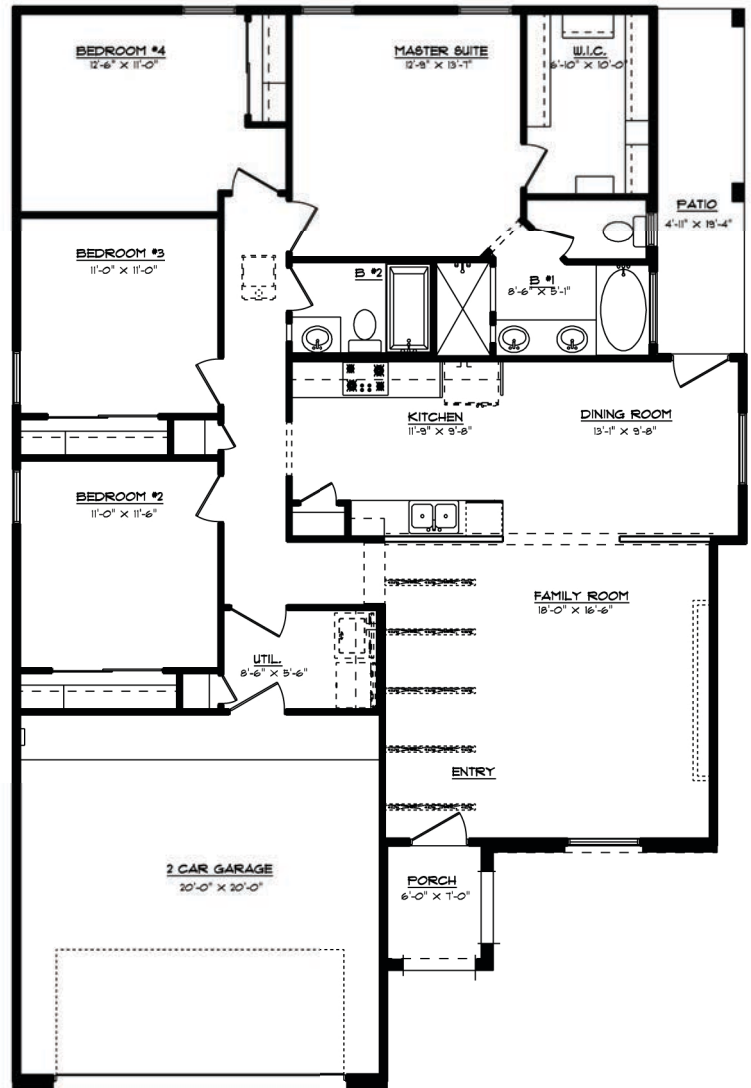


CULLERS HOMES

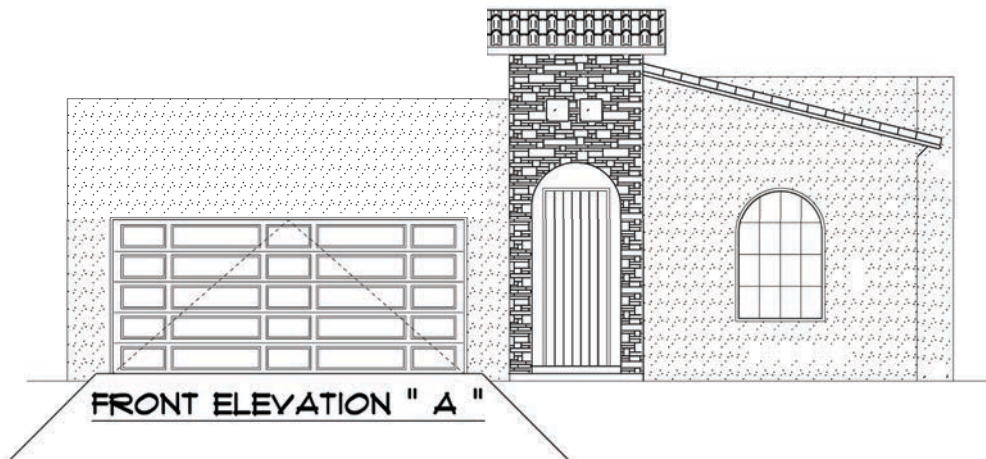
" MOJAVE "

LIVING AREA 1630 SQ.FT.

- 1 STORY
- 4 BEDROOMS
- W.I.C. @ MASTER SUITE
- 2 BATHS
- KITCHEN
- DINING ROOM
- FAMILY ROOM
- ENTRY FOYER
- 2 CAR GARAGE
- UTIL. ROOM



FLOOR PLAN



FRONT ELEVATION " A "

For More Information
call (915) 471-6669 or
visit cullershomes.com



/cullershomes

