



CULLERS HOMES

" DESERT ALOE "

1588 SQ.FT. LIVING AREA

1 STORY

4 BEDROOMS

W.I.C. @ MASTER SUITE

2 BATHS

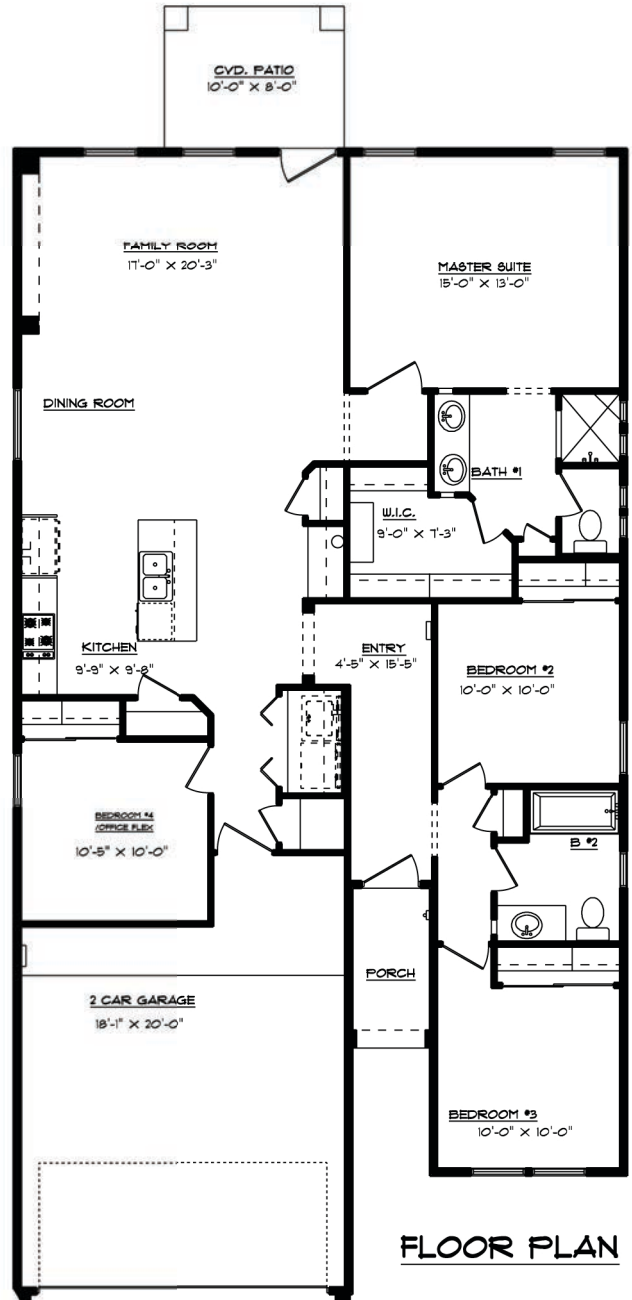
FAMILY ROOM

BREKFAST

KITCHEN

ENTR FOYER

2 CAR GARAGE



FLOOR PLAN



FRONT ELEVATION

For More Information
call (915) 471-6669 or
visit cullershomes.com



/cullershomes

